



JAMES CONRAD

Display your name clearly, don't be afraid to use a professional photo and make sure to sell yourself: use power words, be honest and make sure you're 'about me' showcases relevant skills.

FULL DRIVING LICENCE (CLEAN) | WILLING TO RELOCATE
0203 854 2966 | JAMES@CONRADCONSULTING.CO.UK | LONDON, EC1

Can you drive?
State it clearly

[in](#) | View my profile

Software

- Revit
- AutoCAD
- Microstation
- Adobe CC

Showcase your software proficiencies. If you have graphic design skills, demonstrate your creative ability with your CV!

Education

Architectural University
DipArch RIBA Part III
2007
First-class honours

London University
MA (Hons) RIBA Part II
2003-2005
First-class honours

Uni Upon Thames
BA (Hons) RIBA Part I
2002
First-class honours

How many pages?
Try to fit your work experience onto two pages. Make the information succinct and highlight the most important details so the document is not overwhelming at a glance.

Want to run your completed CV past a professional?
[Consult our consultants](#)
0203 854 2960

Interests



Work History

Senior Architect
High-rise Design Specialists

2015 - Present

List work experience in chronological order, including a summary of achievements, skills used, experiences and project exposure.

Project Architect
City Architecture

2012 - 2015

Leading a team of Architects and Technologists, from planning to handover on £500m Residential, Education and Healthcare schemes.

Architect
City Architecture

2007- 2012

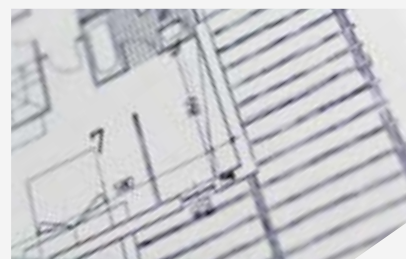
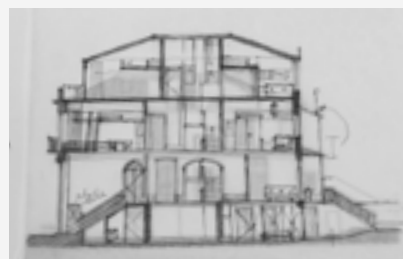
Focusing on inner-city developments in the UK's major cities.

Architectural Assistant (RIBA Part II)
Marie Louise Associates

2005-2007

Focusing on high-end commercial offices, valuing £250m upwards

Project Samples



If you have work samples, be sure to have a separate, well-presented portfolio, but also showcase some of your best drawings on your CV. Make sure the images are good quality (something better than these!)

References

Professional

Provide the name and contact details of two most referees, ideally your two most recent employers.

Academic

If you have recently qualified, you should also provide an academic reference.

Asmolt finihsed?
Have youu
spellchecked?